



Todd Lawson
Sussex County



Michael Petit de Mange
Kent County

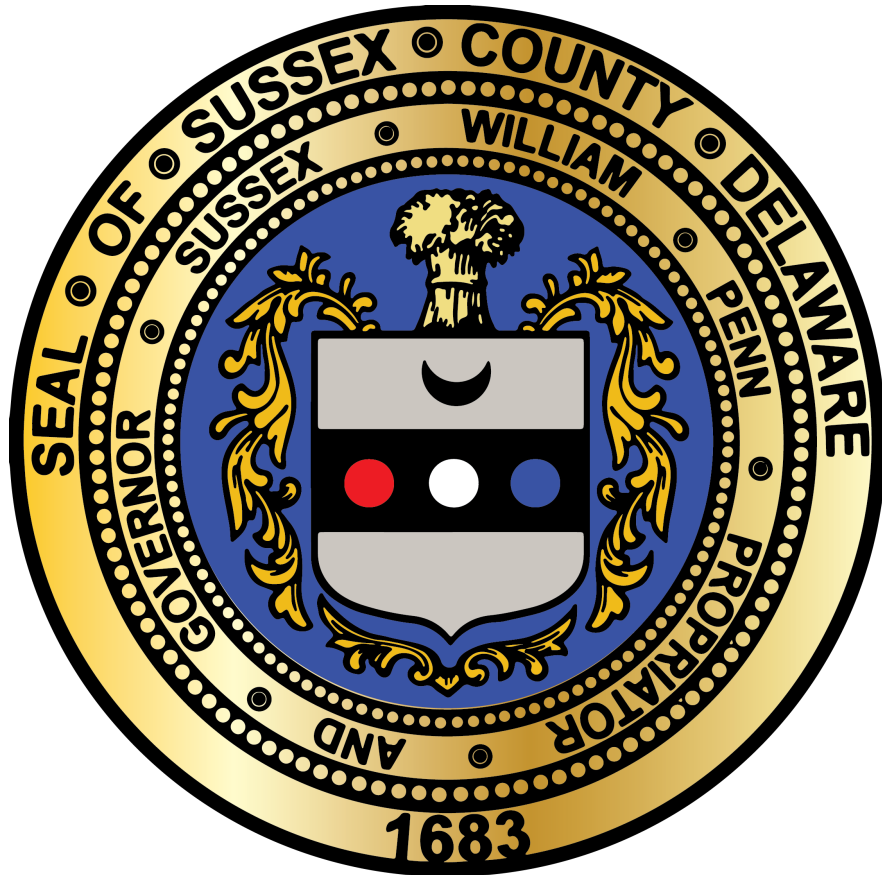


Matt Meyer
New Castle County

ARPA Investments:
Success Stories from Delaware's
County Executives and Administrators!



Todd Lawson
Sussex County Administrator



Sussex County ARPA

Presentation to the Delaware
League of Local Governments

Todd F. Lawson
County Administrator







January 26, 2023

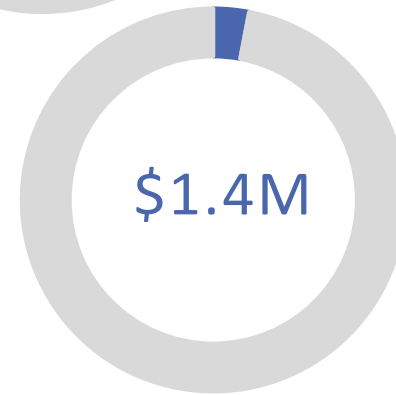
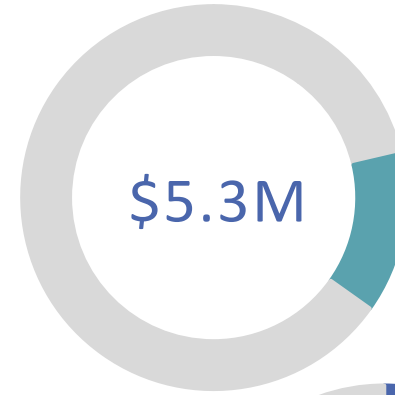
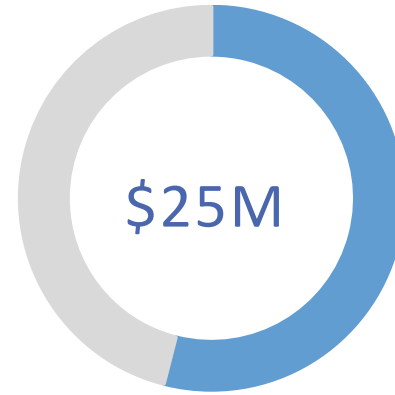


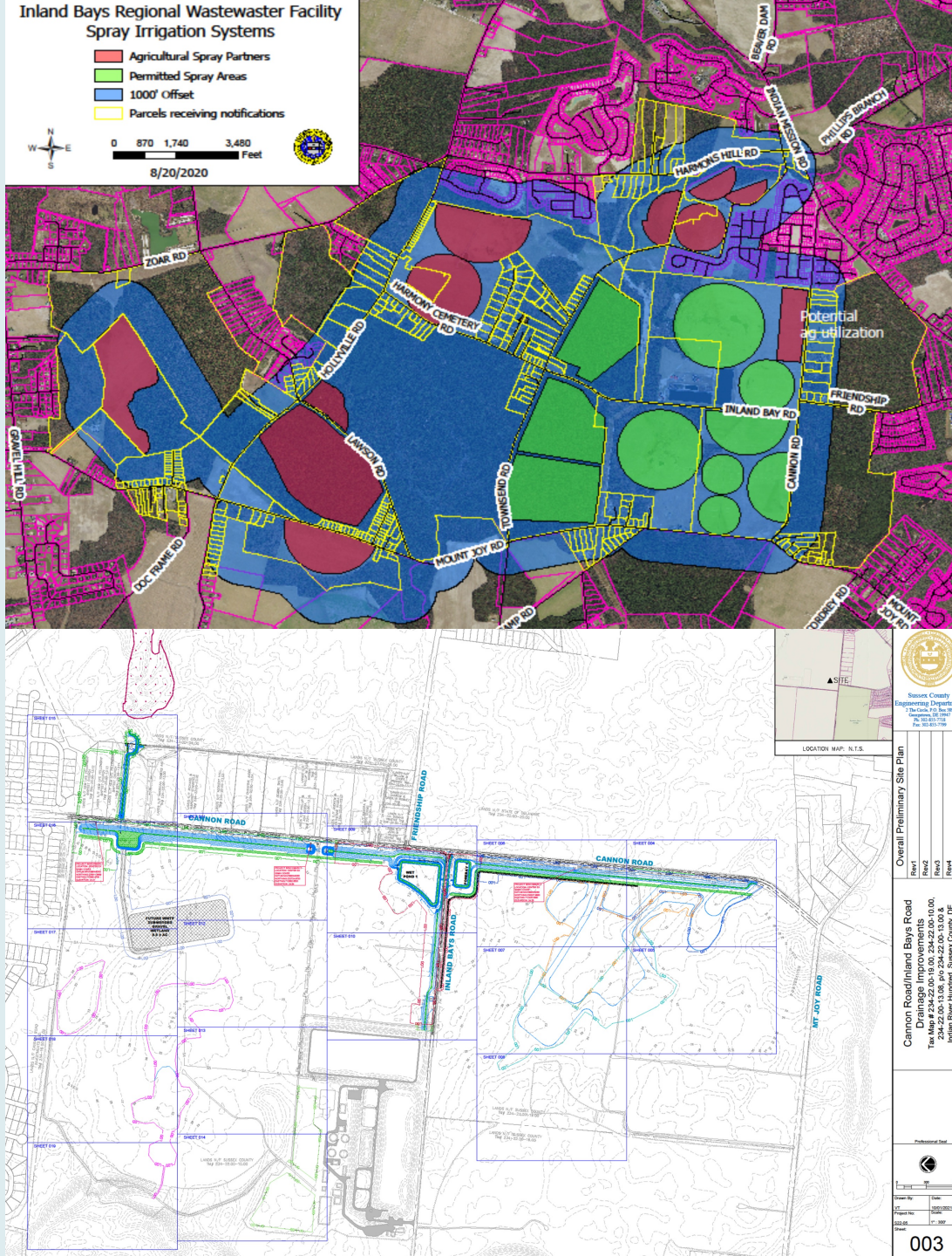
County Established Goals for Allocation

- **Project meets ARPA requirements**
- Projects must be completed or under contract by December 31, 2024
- Do not “grow” government with these temporary funds
 - Do not invest in something the County cannot support after the funds are gone
 - Strengthen the programs/services we already have in place
- Align with Council priorities (affordable housing & adequate infrastructure)
- Do not duplicate efforts

Allocation of Funds

-  Sewer Infrastructure
-  Affordable Housing/Low-income Services
-  Non-Profit Grants
-  Security Upgrades to Sewer Infrastructure
-  EOC/EMS Employees
-  Hospitality Industry – Kitchen Incubator



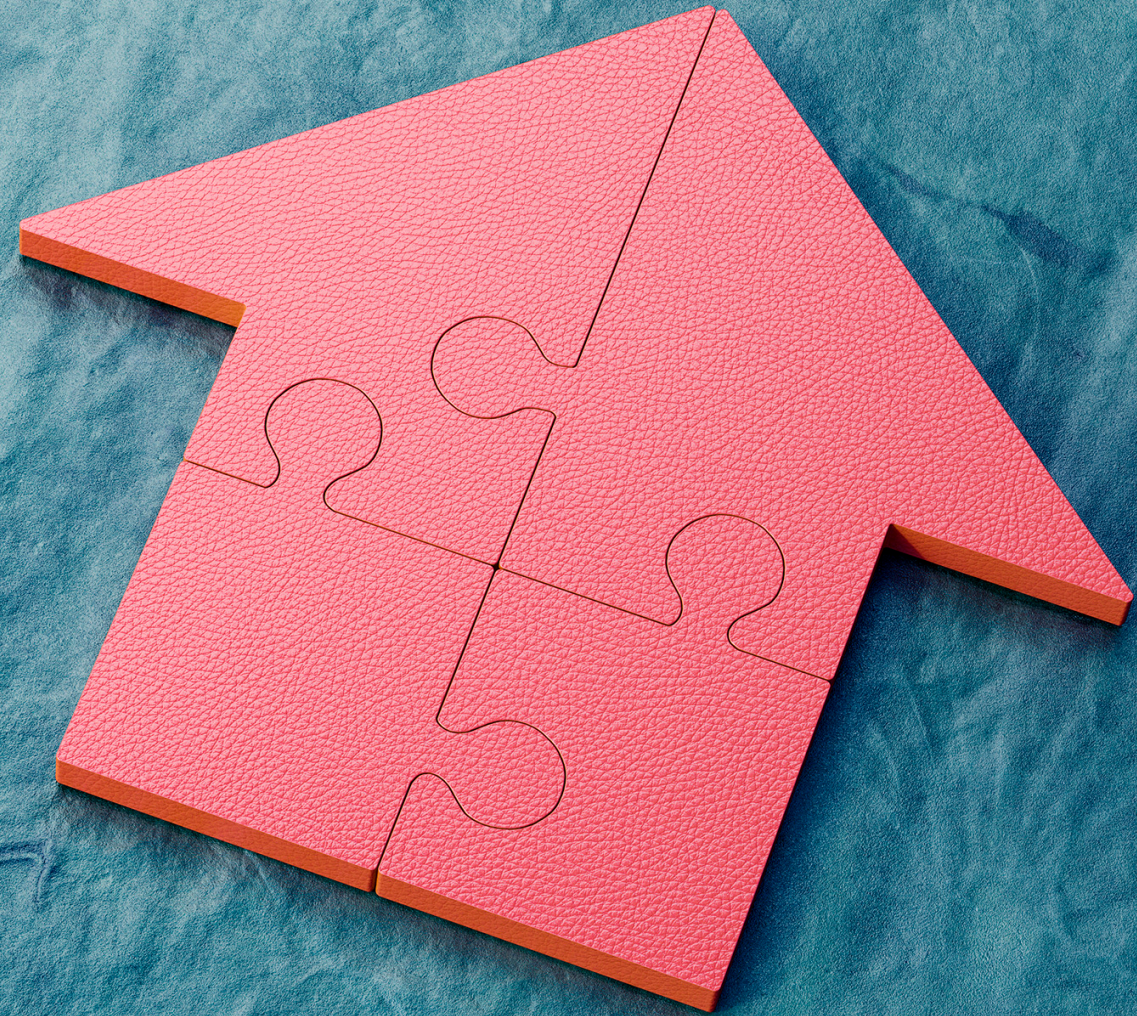


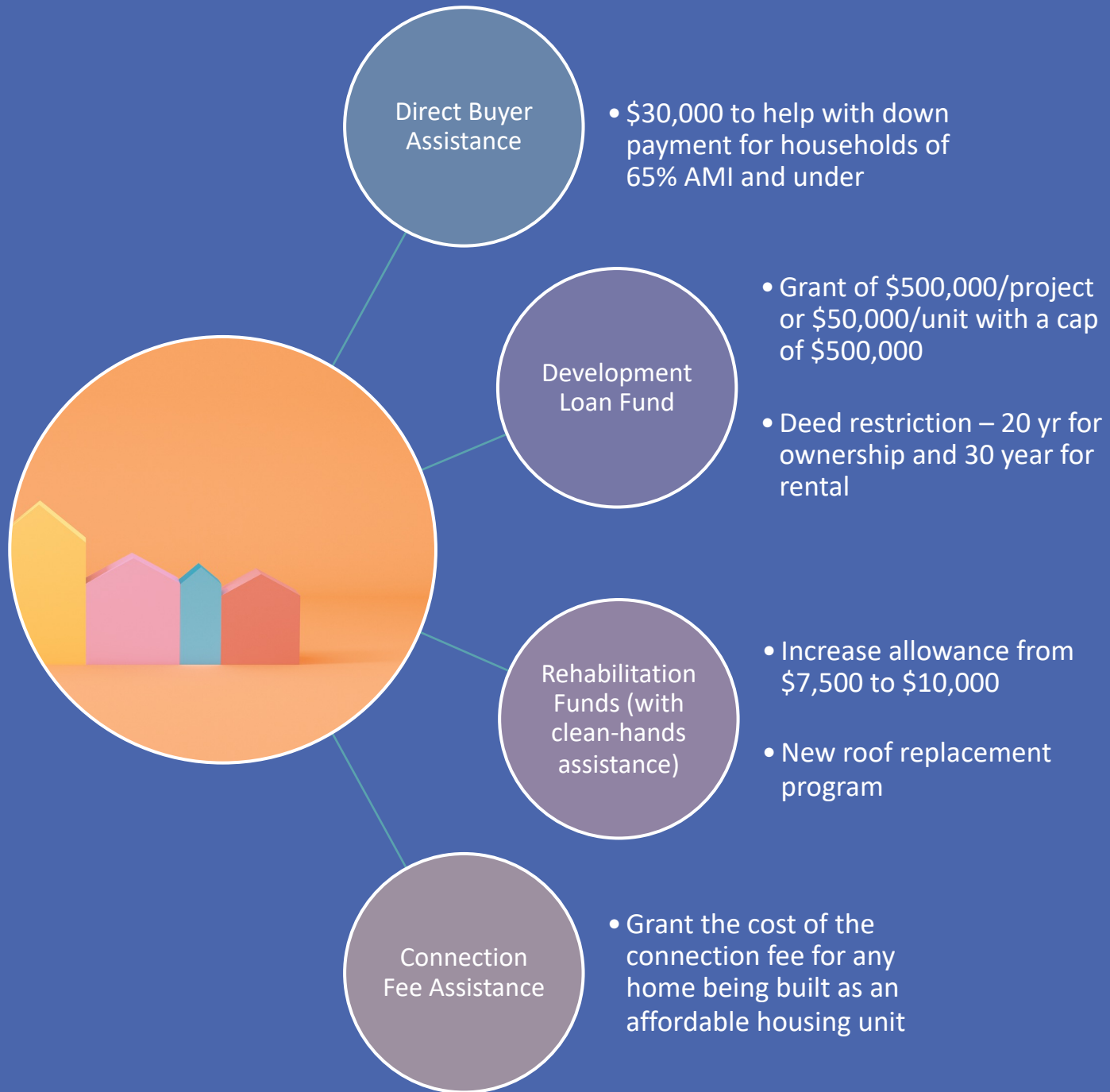
Sewer Infrastructure

- Sussex County is undertaking \$40M upgrade to its Inland Bays Regional Wastewater Facility
- Project design calls for a regional comprehensive facility treatment with a 20-year horizon
- Includes highest quality effluent to permitted spray sites, partner RIB facilities & agricultural spray partners via a distribution loop

Affordable Housing & Low-Income Services

- Compliment services already provided by Community Development & Housing
- Implement strategies outlined by LSA's Housing Opportunities and Market Evaluation (HOME) report
- Expand affordable housing opportunities for households earning 65% or less AMI
- Preserve the existing supply of affordable housing





HOUSING AND LOW-INCOME PROGRAMS

Affordable Housing Awards

Better Homes of Seaford \$500,000

- 36 low-income rental housing units for the elderly in Seaford

MBID of DE \$500,000

- 39 low-income rental units in Millsboro

Milford Housing Development Corp. \$500,000

- 20 low-income homeownership units in Lewes

Milford Housing Development Corp. \$500,000

- 10 low-income homeownership units in Greenwood

Milford Housing for Progress \$500,000

- Rehabilitation on 38 low-income rental units in Millsboro

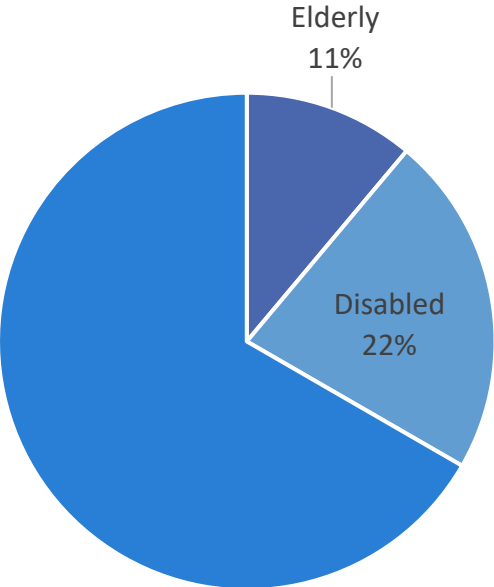
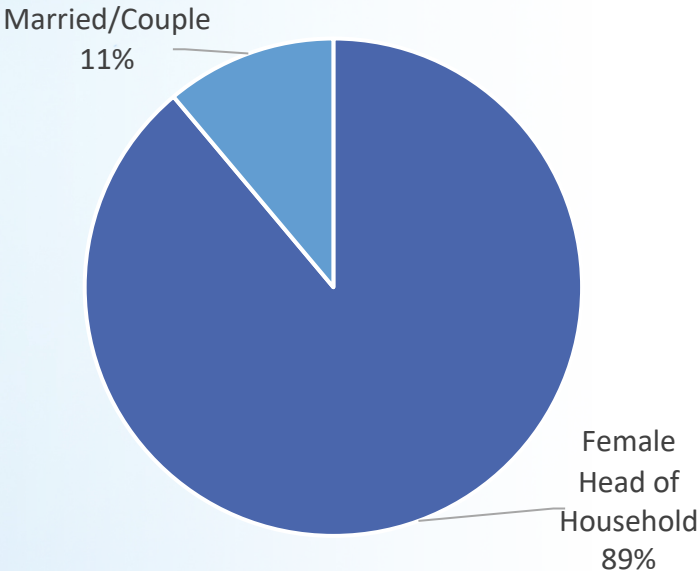
Sussex County Habitat \$500,000

- 10 low-income homeownership units throughout the County

Success

\$300,000 added to County Trust Fund

9 settlements which assisted in getting families who make less than a 65% AMI into a home





Success

- \$500,000 to help repair homes of families making less than 65% AMI
- Projects involve emergency repairs, roofing, and weatherization
- 47 projects completed since March
- 3 projects under construction
- 14 applications in process

64 HOMES REPAIRED

Non-Profit Grant Program

Goal: Assist non-profits that respond to the negative economic impacts of the public health emergency

Criteria:

- Qualified non-profit
- Projects over \$500,000
- **Must be able to demonstrate that they can meet with compliance and reporting requirements of the U.S. Treasury**



Non-Profit Awards

Bayhealth

\$615,000

- COVID medical equipment for new emergency room

Beebe

\$750,000

- Rural health care, social service connection to build public health capacity and address the rural workforce needs

Children's Beach House

\$570,000

- Expansion of its youth development program to provide year-round programming for 100 children

Community Resource Center

\$500,000

- Keep low-income individuals and families stably housed by preventing eviction and utility discounts

Easter Seals

\$665,000

- Replace outdated and inefficient HVAC system as their Georgetown facility

Montessori Works

\$950,000

- Renovate the campus barn to provide space for remedial education, social and emotional assistance and health screenings – facility to be used by the community

Tidal Health

\$950,000

- Provide wrap around services that address social drivers of health and expand health case delivery and access in rural, low-income communities of disadvantaged populations

Take-Aways



ALL “FREE” MONEY HAS STRINGS ATTACHED. TAKE THE TIME TO READ AND UNDERSTAND THE RULES



STICK WITH WHAT YOU KNOW



DON'T FORGET TO LOOK AT LONG-TERM COMMITMENTS



USE THE REVENUE REPLACEMENT ALLOCATION FUNDS AS A SAFETY NET



Michael Petit de Mange, AICP
Kent County Administrator

ARPA BRIEFING

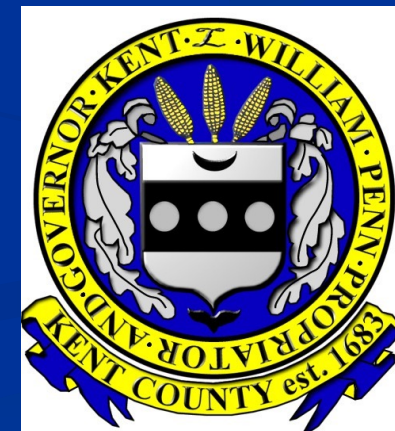
Kent County, Delaware

DELAWARE LEAGUE OF LOCAL GOVERNMENTS



*Mike Petit de Mange, AICP
County Administrator - Retired*

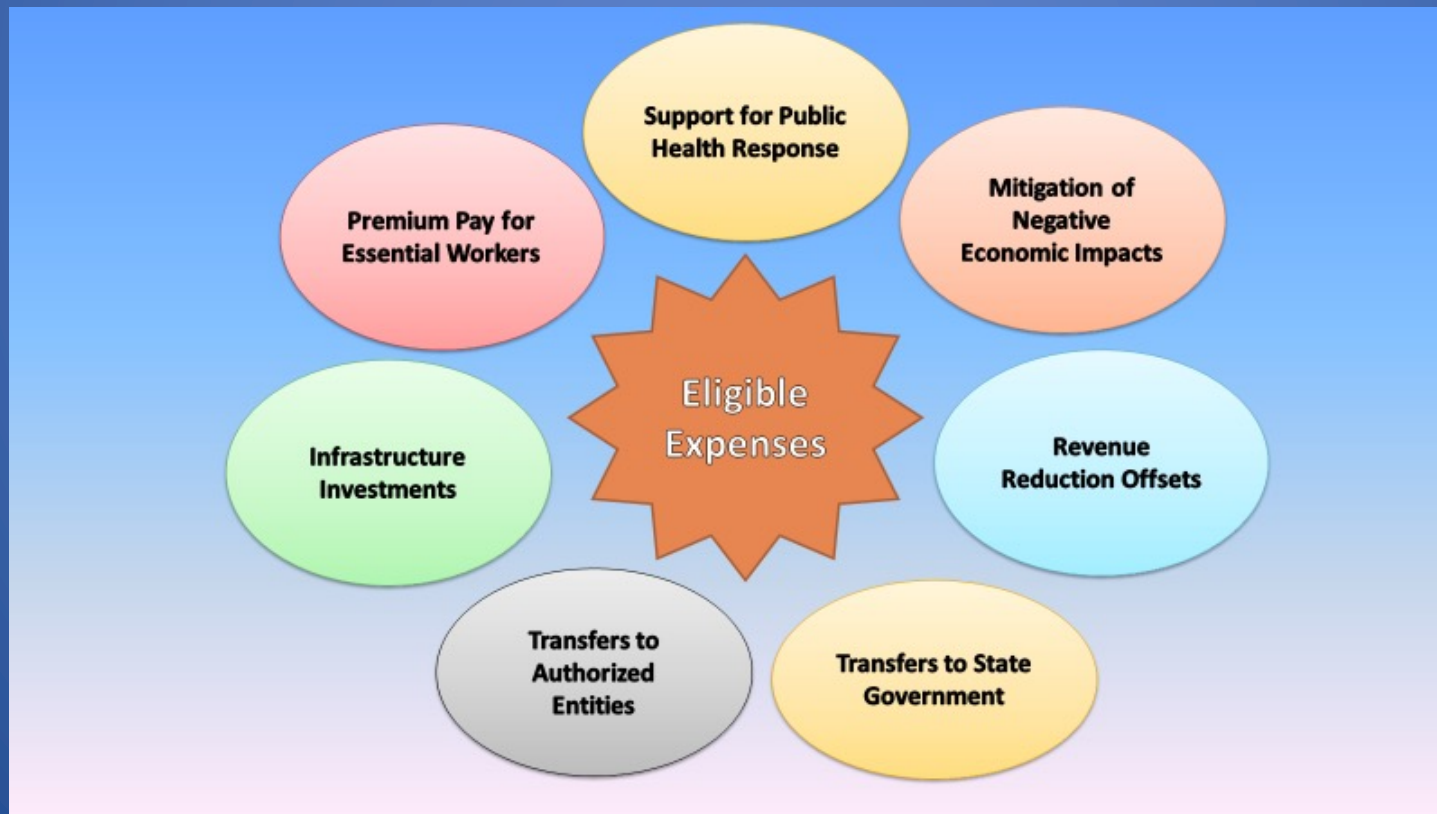
Thursday, January 26, 2023





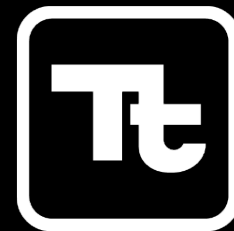
TOTAL ALLOCATIONS

- State of DE = \$ 924,597,608 Million
- Kent County = \$ 35,115,561 Million
- Kent Cities & Towns = \$ 30,291,414 Million



ARPA CONSULTING SERVICES

- **August 2021** – Levy Court Directs RFQ to be Issued
- **December 2021** – Levy Court Selects Tetra Tech Incorporated
- **January 2022** – Contract with Tetra Tech Executed



TETRA TECH

SMALL BUSINESS & HOSPITALITY GRANT PROGRAMS



- **Partnerships Established:** Central Delaware Chamber of Commerce & Kent County Tourism Corporation – November 2021
- **Formal Program Agreements:** Application Processes Developed
- **ARPA Funds Budgeted:**
 - Small Business Grant Program - \$3 Million
 - Hospitality Grant Program - \$2 Million
- **Application Period:** January 3, 2022 through March 31, 2022

SMALL BUSINESS & HOSPITALITY GRANT PROGRAMS



Total Approved Applicants	172		Total Awarded
<i>Small Business</i>	150	87.2%	\$ 2,413,951
<i>Hospitality</i>	22	12.8%	\$ 995,858
SLFRF Priority Areas	137	79.6%	
<i>Impacted</i>	100	58.1%	
<i>Disproportionately Impacted</i>	37	21.5%	

LEVY COURT PRIORITY PROCESS

APRIL 2022

	Service Area	Points	# of Votes
1	Senior Services / Centers	22	7
2	Emergency Services	20	6
3	Homelessness / Food Banks	19	7
4	Water / Stormwater / Wastewater Infrastructure	8	5
5	County Building Ventilation	5	4
6	Substance Abuse / Mental Health	4	2
7	Day Care / Early Learning / Programs for Youth	4	1
8	Civic Organizations	4	1
9	Tourism	2	2
10	Workforce Housing	2	2
11	County Employees	0	0

ARPA GRANTS TO FIRE COMPANIES

JULY 2022



- Submitted Requests documenting Revenue Losses & COVID Related Expenses
- Drawn from Standard Revenue Loss Allowance
- All Fire Companies, One (1) Ambulance Service, Fire Police
- TOTAL DISTRIBUTED = \$ 3,761,356

ARPA GRANT PROGRAM FOR NONPROFIT SERVICE PROVIDERS



- **May 2022 – Levy Court Appropriated \$8 Million**
 - Children/Youth Services - \$2 Million
 - Senior Services - \$2 Million
 - Homeless/Food Insecure - \$2 Million
 - Disabled Communities - \$2 Million
- **June 2022 – Levy Court Approved Nonprofit Grant Program**
 - Revenue Loss (\$100 K Max)
 - Capital Projects (\$ 500 K Max)
- **Application Period:** July 28th, 2022 through October 28th, 2022
- **TOTAL APPLICATIONS RECEIVED (37):** 31 Revenue Loss; 21 Capital Projects

OTHER ARPA EXPENDITURES TO DATE



- **Septic Elimination Project**\$1.27 Million
- **DE Turf Regional Sports Complex**\$1.3 Million
- **NCC Initiated Substance Use Disorder Study**\$ 75 K
- **Capital Park Playground Restoration**\$250 K
- **Kent County IT/Website Improvements**\$950 K

FUTURE ARPA INITIATIVES



- **December 2022 Appropriations:**
 - Stormwater Management/Drainage Projects \$2.0 M
 - Wastewater System Improvements \$4.0 M
 - Civic Organization Grant Program \$1.0 M
 - County Facilities HVAC Improvements \$1.0 M
- **Remaining Uncommitted Funds \$5,726,286**
- **Future Potentials**



Matt Meyer
New Castle County Executive

**DLLG Executive
Committee**

ARPA Funds Strategy

January 26, 2023

**County Executive
Matt Meyer**



Absolute Royal Pain in the Assets (ARPA)

Opportunities

- Resources to address critical needs
- Ability to leverage into matching funds
- Timed well to rethink needs coming out of pandemic

Challenges

- Handcuffs
- One-time funds: Hard to fix structural issues
- Prioritizing across many needs
- Compliance!

Mitigating Compliance Risk

1. Allocated funds to grant administration, including hiring a full-time ARPA Coordinator and retaining services of Guidehouse (formerly Grant Thornton)
2. Continuing to engage CARES Act Audit & Compliance Committee to include ARPA
 - County Auditor Bob Wasserbach chairs monthly committee meeting with a focus on practices and expenditures of both streams of federal funding
3. Submitted budgets for both tranches to County Council for consideration
4. Bring awards/contracts over \$50,000 to County Council via Resolution
5. Vet all projects through a consistent process:



Historic Cross-County Collaboration

HMA
INSTITUTE
ON
ADDICTION



Delaware Substance
Use Disorder
Treatment System
Needs Assessment

Prioritization Challenge

Hard to fix structural problems with one-time money

NCC priorities include:

- Investing in infrastructure needs: wastewater and cellular broadband
- Supporting core county functions
- Addressing urgent community concerns: Affordable Housing and Building Better Communities
- Developing pilot programs for targeted needs

New Castle County Government's First "Pay for Success" Contract



The Longwood Foundation will give upfront funding to CFF to expand nurse home visiting



CFF will expand services to ~120 NCC moms by December 2026 and collect and record outcome data



Social Finance will validate whether County preferred outcomes are achieved



NCC will reimburse funds to Longwood only to the extent that outcomes are achieved



Longwood will grant CFF 40% of outcome funds received, which CFF will use to continue supporting NCC families



County funds are only spent when outcomes are met!

Building Better Communities

Taking a neighborhood-by-neighborhood approach to improving communities

- Providing programming grants to non-profits focused in specific neighborhoods
- Funding Project SEED: engaging in communities with cleanup events, lighting enhancements, youth engagement, playground enhancements

DLLG Election of Officers & Executive Committee Members

Officers

President, Archie Campbell, Milford

Vice President, Nick Smith, Clayton

Executive Committee

Valerie Forbes, Smyrna

Jeffrey Hall, Kent County Levy Court

Michael Spencer, Newport

Eric Scott Thompson, Elsmere

Michael Vincent, Sussex County